



# TutorMandarin



请问邮局怎么走？

Qǐngwèn yóujú zěnmē zǒu

How to go to the post office?



## 导入 Warm up

- 你家旁边有什么?  
Nǐ jiā pángbiān yǒu shénme?





# 认识

rènshì

v. to know; to recognise



我不**认识**那个人。

Wǒ bú **rènshì** nàge rén.

I don't know that person.



路

lù

n. road



我知道这条路的名字!

Wǒ zhīdào zhè tiáo lù de míngzì!

I know the name of this road!



# 怎么

**zěnmě**

Question pronoun . How to



怎么 zěnmě +V

## 请问邮局**怎么**走?

Qǐng wèn yóujú **zěnmě** zǒu?

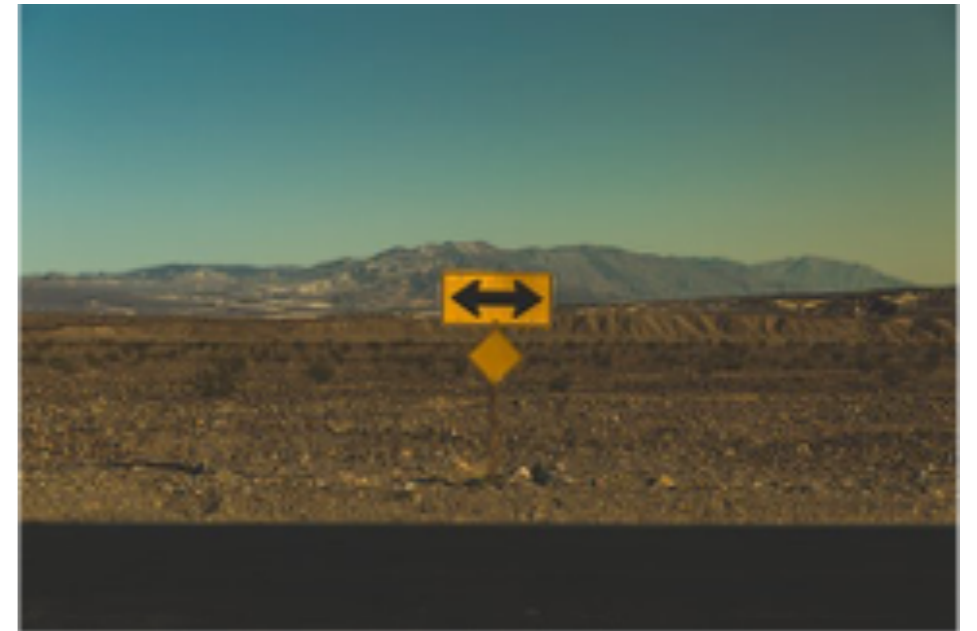
How to go to the post office?



走

zǒu

v. to get there Walk, go



到那间酒吧，**怎么走**？

dào nà jiān jiǔba, **zěn me zǒu**?

How to get to that bar?



# 邮局

yóujú

n. Post office



图书馆在**邮局**的旁边。

Túshūguǎn zài **yóujú** de pángbiān.

Post office is next to the library.



# 路口

lùkǒu

n. intersection



这个路口右拐。

Zhè gè lùkǒu yòuguǎi.

Turn right at this intersection.





# 右拐

yòuguǎi

v. to turn right



这个路口右拐。

Zhè gè lùkǒu yòuguǎi.

Turn right at this intersection.



# 左拐

zuǒguǎi

v. To turn left



那条路左拐就到我家了。

Nà tiáo lù zuǒguǎi jiù dào wǒ jiā le.

Turn left on that road then is my house.



# 前

qián

n. Front/forward/ahead



往前走就是我家。

Wǎng qián zǒu jiù shì wǒ jiā.

Go forward then is my house.



到

dào

Verb. to arrive; go to; leave for

A: 你要**到**哪儿?

Nǐ yào **dào** nǎ'er?

B: 我要**到**北京餐厅

wǒ yào **dào** běijīng cāntīng





# 就

jiù

adv. Then/right away



图书馆，往前走右拐就到了。

Túshūguǎn, wǎng qián zǒu yòuguǎi jiù dào le.

Go forward and turn right, the library is there.



从

cóng

Preposition. from



**从这里往前走,就到了**

**Cóng** zhèlǐ wǎng qián zǒu, jiù duō le.

Go forward from here, then you get there.



## 哪条路能去海边?

Nǎ tiáo lù néng qù hǎibiān?



中文路

Zhōngwén lù



英文路

Yīngwén lù



Ask direction with 到\_\_\_\_\_怎么走?

到\_\_\_\_\_怎么走?

dǎo \_\_\_\_\_ zěnmē zǒu?







# 往

◆ preposition. To go toward

## wǎng

to indicate direction or position

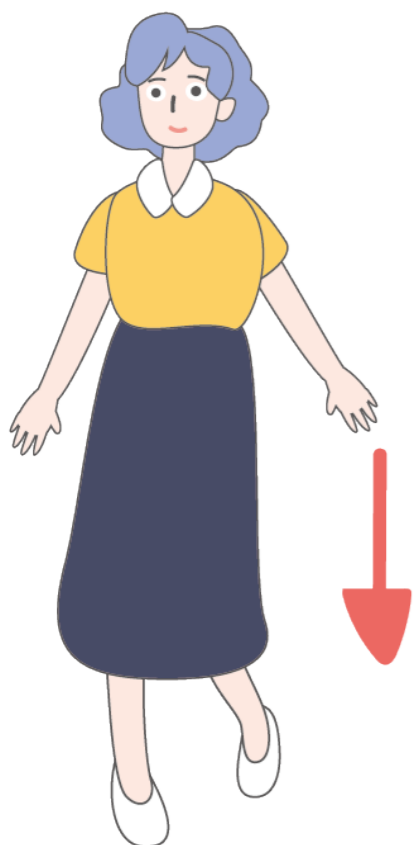
**往 + direction + Verb**

**往前走**，**中国饭馆就到了**。

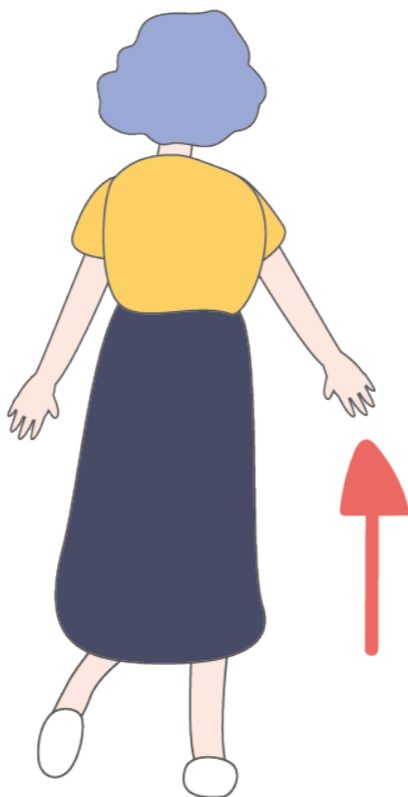
Wǎng qián zǒu, Zhōngguó fànguǎn jiù dào le

Go ahead and turn right, then Chinese restaurant is there.

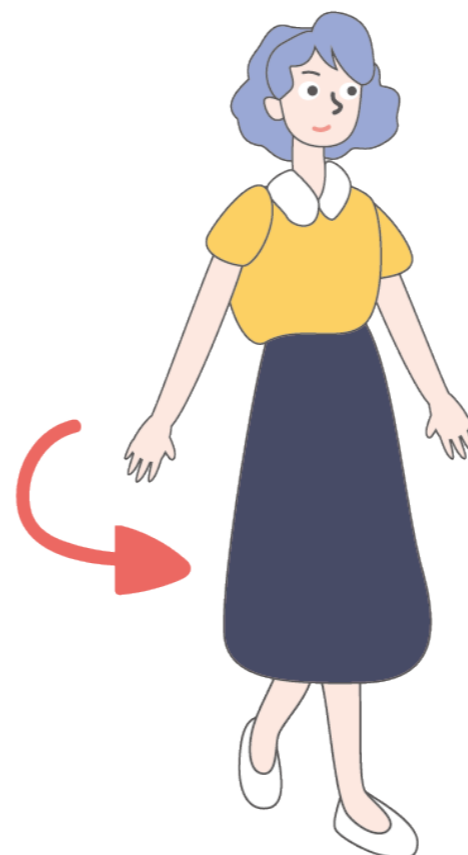
练习 Exercise



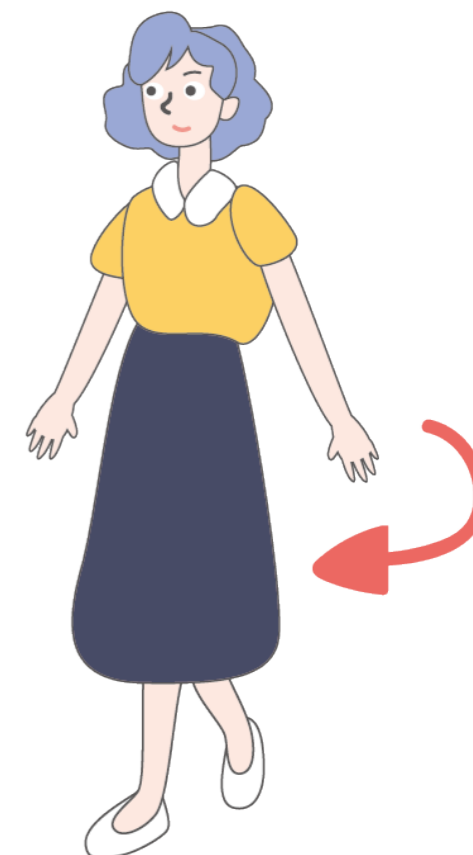
往前走



往后走



往右拐

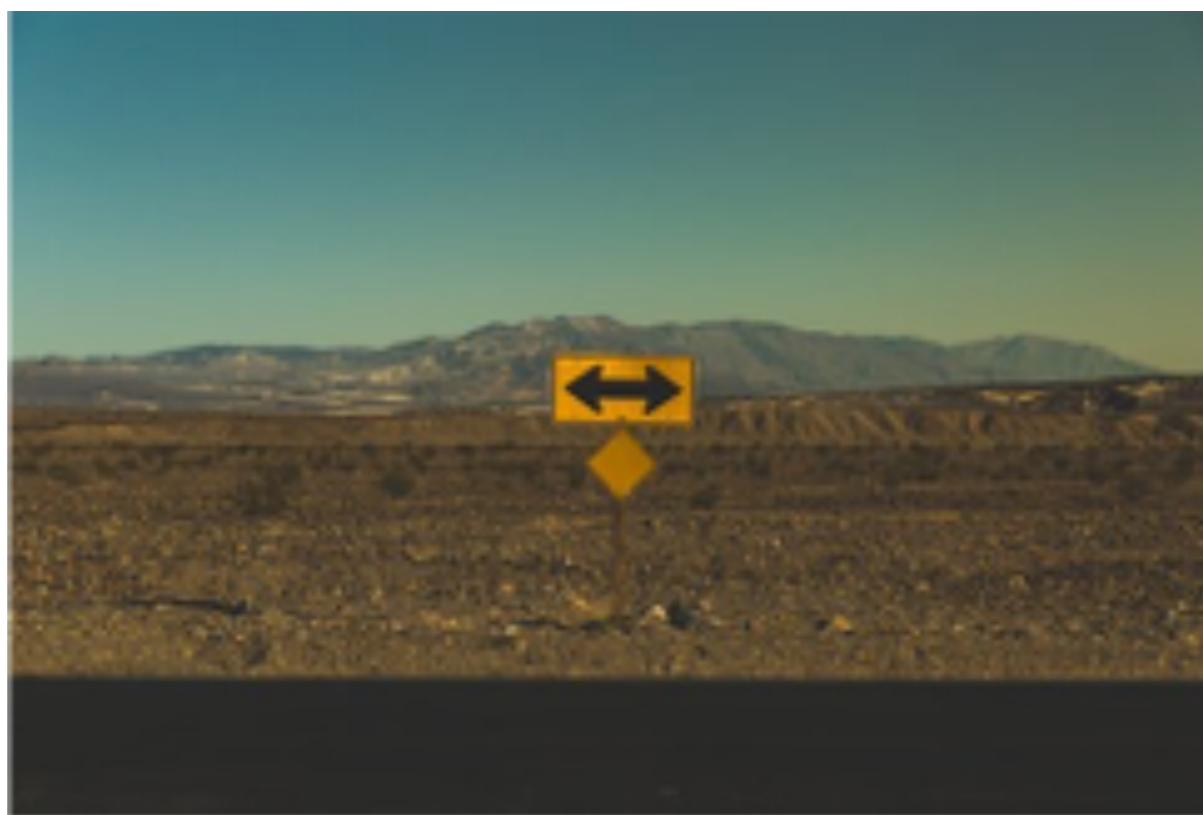


往左拐



## 往哪儿拐?

wǎng nǎr guǎi?



邮局

yóujú

图书馆

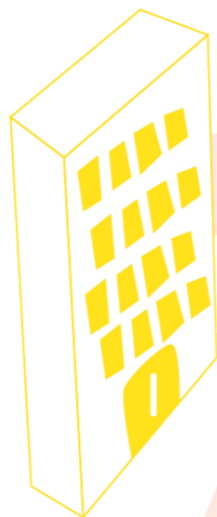
túshūguǎn



# 图书馆怎么走?

Túshūguǎn zěnme zǒu?

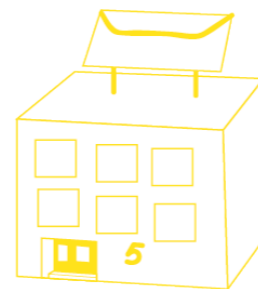
美美家  
Měiměi jiā



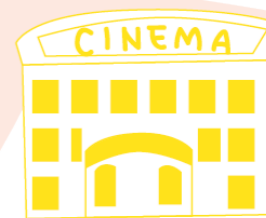
图书馆  
túshūguǎn



邮局  
yóujú



电影院  
diànyǐngyuàn



中国饭馆  
Zhōngguó fànguǎn

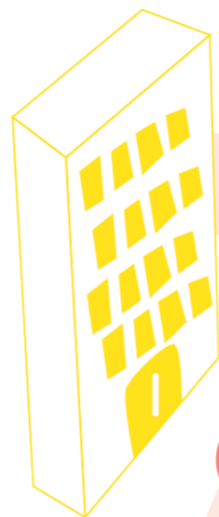




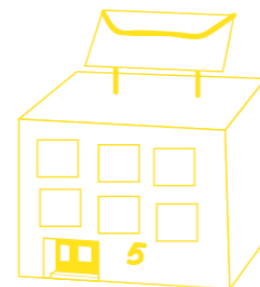
# 邮局怎么走?

Yóujú zěnme zǒu?

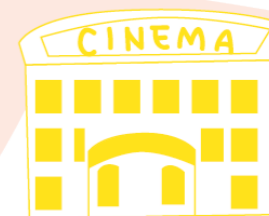
美美家  
Měiměi jiā



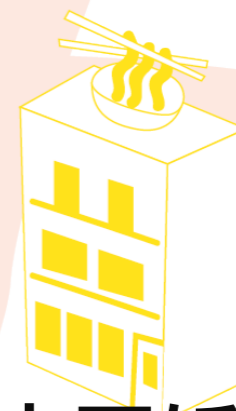
图书馆  
túshūguǎn



邮局  
yóujú



电影院  
diànyǐngyuàn



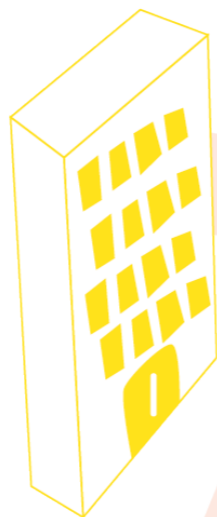
中国饭馆  
Zhōngguó fànguǎn



# 中国饭馆怎么走?

Zhōngguó fànguǎn zěnmē zǒu?

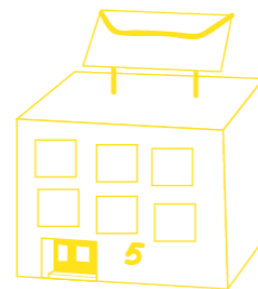
美美家  
Měiměi jiā



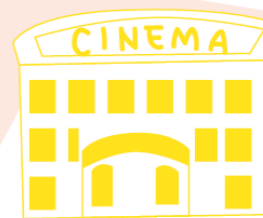
图书馆  
túshūguǎn



邮局  
yóujú



电影院  
diànyǐngyuàn



中国饭馆  
Zhōngguó fànguǎn





玉如  
Yùrú

李强，我不认识路，请问从邮局怎么走？

Lǐ Qiáng, wǒ bú rènshì rù, qǐngwèn cóng yóujú zěnmē zǒu?

Lǐ Qiáng, I'm not familiar with the roads. Do you know how to get to the post office from here?

从这里往前走左拐，就到了。

cóng zhèlǐ wǎng qián zǒu zuǒguǎi jiù dào le.

Walk ahead from here, turn left, post office is right there.



李强  
Lǐ Qiáng



玉如  
Yùrú

好，请问**邮局**旁边有图书馆吗？

Hǎo, qǐngwèn **yóujú** pángbiān yǒu túshūguǎn ma?

OK, is there a library next to the post office?

**邮局**旁边没有图书馆，图书馆在电影院旁边。

**Yóujú** pángbiān méiyǒu túshūguǎn, túshūguǎn zài diànyǐngyuàn pángbiān.

Library is not next to the post office, it's next to the cinema.



李强  
Lǐ Qiáng



## 课文 Conversation



玉如  
Yùrú

电影院怎么走？

diànyǐngyuàn zěnmē zǒu?

How can I go to the cinema from here?

从这儿往前走右拐就到了。

cóng zhèr wǎng qián zǒu yòuguǎi jiù dào le.

From here go ahead and turn right, then it's cinema.



李强  
Lǐ Qiáng



玉如  
Yùrú

好，谢谢你！

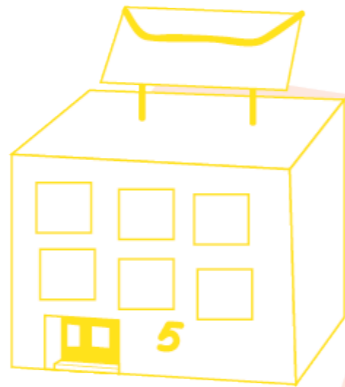
Hǎo, xièxie nǐ!

OK, Thank you!

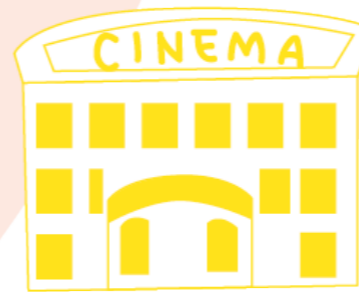
练习 Exercise



邮局  
yóujú



中英路  
Zhōngyīng lù



电影院  
diànyǐngyuàn



中国饭馆  
Zhōngguó fànguǎn



图书馆  
túshūguǎn



Answer the question according to the conversation.

① 从中国饭馆到邮局怎么走？

Cóng Zhōngguó fànguǎn dào yóujú zěnmē zǒu?

② 从这儿怎么到电影院？

Cóng zhèr zěnmē dào diànyǐngyuàn?

③ 图书馆旁边有什么？

Túshūguǎn pángbiān yǒu shénme?

④ 中国饭馆在哪条路？

Zhōngguó fànguǎn zài nǎ tiáo lù?



## 讨论 Discussion

- ① 从你家到图书馆怎么走？  
Cóng nǐ jiā dào túshūguǎn zěnmē zǒu?
- ② 从你家到饭馆怎么走？  
Cóng nǐ jiā dào fànguǎn zěnmē zǒu ?
- ③ 从你家到海边怎么走？  
Cóng nǐ jiā dào hǎibiān zěnmē zǒu ?



## 讨论 Discussion

This is the end of your PDF preview. Sign up to get the free download!